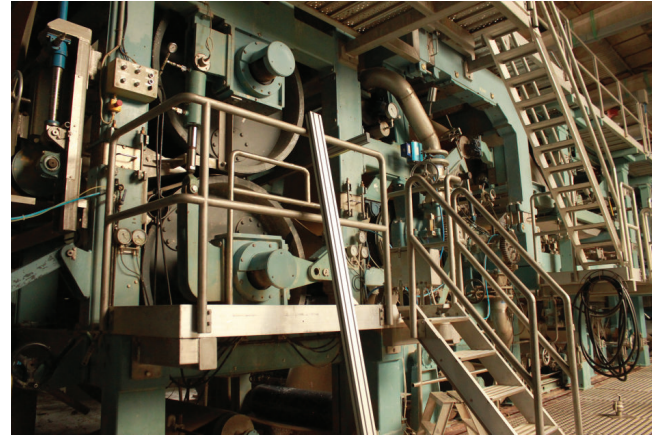


Doing business in the paper industry is more competitive than ever. It's a battle with no place for the unprepared. Every day, you are faced with new profitability and availability requirements. And every day your press section isn't working to its full potential, your profits are bleeding.

We will help you to optimize your performance by dynamically measuring the press nip and assisting you to get your press section to work better than ever before.



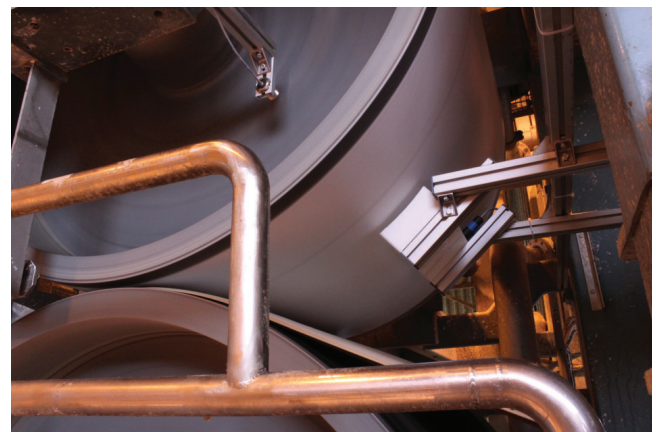
What's in it for you?

- Increased efficiency
- Lesser steam consumption
- Increased productivity
- Fewer felt exchanges



What are you doing today?

	PressEyes Portable	Roll embedded sensors	Static measurements
Peak pressure	✓	✓	✓
Press nip curve	✓	✓	✗
Load	✓	✓	✗
Nip length	✓	✓	✓
Measurement at operating speed	✓	✓	✗
Measurement at operating load	✓	✓	✓
Vibrations	✓	✗	✗
Unevenness	✓	✗	✗



How does it work?



We are performing a dynamic measurement with thin sensors attached to the press rolls. We measure at full speed and pressure, and the information is transferred wirelessly to a laptop for real time presentation.

What can we handle?



Applications: Conventional and shoe presses in paper and pulp drying machines
Accuracy: 50000 measurements/second
Number of sensors: Typically 9-12
Sensor unit thickness: < 0.4 mm
Maximum pressure: 50 MPa
Temperature range: -20°C to +120°C
Machine speed: 100-2000 m/min

How much can you save?



For a machine producing 200'000 tons per year, a 0.5% increase in dryness will give you a saving of approximately 2 M\$ from increased availability and steam savings.

Want to be best friends?

Vasasensor is your one-stop-shop for achieving optimal press sections on all your paper machines. Sign up for a maintenance agreement and we will make sure that your presses are always working at their best!